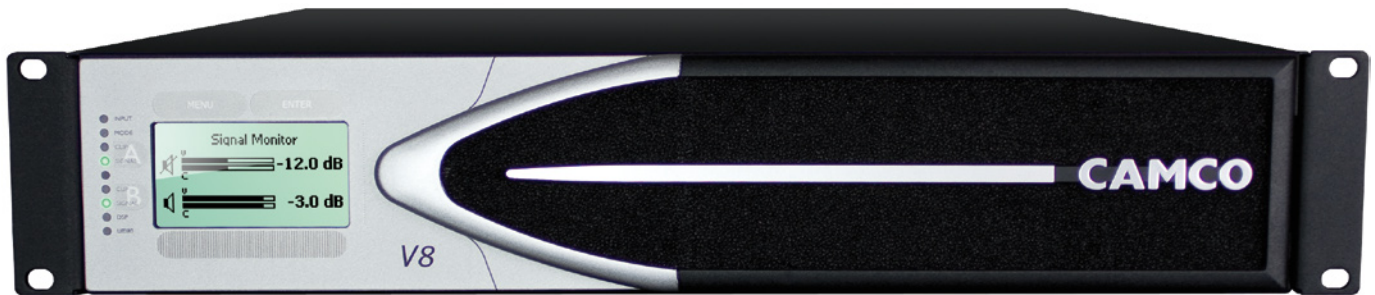


CAMCO

The Ultimate Listening Experience



The evolution of technology, its application and the resulting real world solutions are at the heart of every CAMCO product. With the introduction of the new CAMCO “Silver Series V8” we are once again pushing the boundaries of power, performance, sonic integrity and integration.

Power

The CAMCO Vortex V8 Silver Series delivers 10,000 Watts of pure power in 2 Ohm or 4 Ohm applications. You choose, same powerful result, a constant 5000 Watts of power per channel. With CAMCO’s latest Hybrid Class H output stage topology, advanced SMPS designs, the V8 offers levels of power and application flexibility truly suited to all worldwide pro-audio markets.

No more Switches

A key part of the new V8 design is the absence of any control knobs or switches, front or back. Control of all parameters is via the screen user interface. This clean, practical approach reduces wear & tear factors on moving parts while delivering a forward thinking approach to function, safety and plain good looks.

UMAN Network Solution

UMAN network solutions, Any input – Any network – Any device. This advanced network solution is fitted as standard. UMAN is the next generation, a true network system for all. Super low latency – no problems with integration to existing technologies – no limitations.

Intelligent Input Routing

The signal path is always optimal, no latency, a direct path from input to output bypassing any unnecessary A to D converts/DSP. The network input is linked direct to the amplifier channel. You choose, run the system in full analogue or digital domains.

DSP

An optional plug-in DSP card is available, allowing the V8 to become a fully DSP/DSP Network controlled speaker management system.

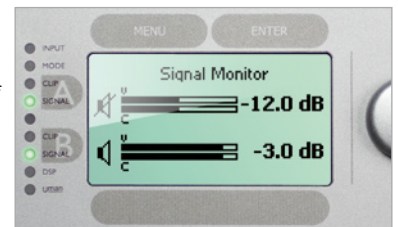
Features

- 4900 Watts of peak power per channel in 4 Ohm and 5300 W in 2 Ohm mode
- No external control knobs or switches
- UMAN network control
- Intelligent input routing
- Optional plug-in DSP card
- Dual Voltage SMPS with automatic selection for 120 v/230 v
- 3 Modes of operation: Dual Channel, Mono Bridge, Parallel-Mono

6 Years Warranty

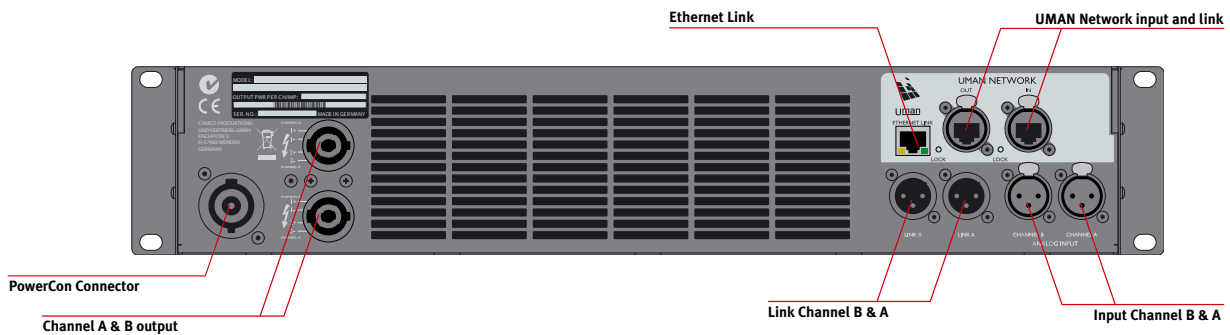
CAMCO amplifiers renowned reliability is backed up by 6 years warranty from date of first purchase.

In addition to all amplifier functions being accessed and controlled by the screen user interface and gain slider, clear LED indication of Clip/Signal for both channels can be found on the LHS.



UMAN digital connectors, input/link with a further Ethernet port for direct control. Note, UMAN connectors has a LED “Lock” indicator.





Specifications:

Vortex V8

Dual Channel ¹⁾	8 Ω ²⁾	2300 W
	4 Ω ²⁾	4000 W
	2 Ω ²⁾	5300 W
	Peak 4 Ω ²⁾	4900 W
	Peak 2 Ω ²⁾	5300 W
Mono	16 Ω ³⁾	4600 W
	8 Ω ³⁾	8000 W
	4 Ω ³⁾	10600 W
	2 Ω ⁴⁾	8000 W
	1 Ω ⁴⁾	10600 W

Output Circuitry	Hybrid Class H
Output Voltage	200 V _p / 400 V _{pp}
Frequency Response 4 Ω load, 15 dB below rated power	20 Hz - 20 kHz ± 0,07 dB
Input Impedance	22 kΩ balanced
Input Gain	selectable: 26 dB, 32 dB or 1,4 V input sensitivity
Protection Circuits	inrush-current limitation, protection circuits against power on/off transients, temperature monitoring of transformers and heat-sinks, output DC protection, temperature dependent SOA protection, intelligent mains fuse protection
Fan	2 temperature dependent speed-controlled axial fans
LED Indicators	Signal & Clip for each channel
Output Connectors	One 4-pole SPEAKON connector for each output channel (bi-amping possible)
Modes Of Operation	DUAL CHANNEL, MONO BRIDGE and PARALLEL-MONO
Options	Plug-in DSP card
Signal To Noise-Ratio 20 Hz - 20 kHz, 4 Ω load	> 107 dB (unweighted) > 110 dB (A-weighted)
THD+N (typical) 20 Hz - 17 kHz, 4 Ω load, 15 dB below rated power	< 0,1 %
Damping Factor 8 Ω load, 1 kHz and below	> 400
Net Weight	13,0 kg / 28,7 lbs
Shipping Weight	15,6 kg / 34,4 lbs
Dimensions (WxHxD)	483 x 88,9 x 453 mm / 19 x 3,5 x 17,8 inches (19", 2U)
Shipping Dim. (WxHxD)	540 x 135 x 615 mm (0,045 m ³) / 21,3 x 5,3 x 24,2 inches

1) All channels driven, 1 kHz, 1% THD @ 230 VAC 2) All channels driven, 1 kHz, single sine wave 3) Mono bridged 4) Parallel mono
Subject to technical alterations without prior notice.

VORTEX / Series



Precision, pure natural sonic performance and total power define the Vortex series. The difference; total care about audio design and integrity.

Pure Sonic Performance

Total precision and transparency is the trademark of the Vortex series, thanks to its careful design eliminating sound-deteriorating drawbacks right from the start. This is also evident in the Vortex Series exceptional low distortion values and excellent signal to noise ratio.

Flexible in Power & Application

The Vortex amplifier can easily switch between applications and speaker setups due to its unique power regime. This consists of an extensive power reservoir, stability down to 1 Ohm loads and the ability to run in Stereo, Bridge Mono and Parallel Mono operation modes.

Designed for Touring & More

With a weight of just 12,4 kg and designed for the demands of touring professionals the 2 RU chassis ensures exceptional reliability. All dynamic protection circuits are the result of the philosophy, "Audio-at-all times".

Remote Control Included

The Vortex Series remote control system allows complete application freedom, from FOH to control room centre, the ability to control and monitor usage comes as a standard feature.

Optional DSP & Audio Network

All Vortex amplifiers can be upgraded with CAMCO's advanced controller-modules, converting the Vortex into a complete loudspeaker management system. Network solutions via EtherSound or CobraNet offer stand alone Network option modules or combined DSP and Network modules.

6 Years Warranty

CAMCO amplifiers renowned reliability is backed up by 6 years warranty from date of first purchase.

The entire signal path in the Vortex amp is microprocessor controlled, even the gain setting is digital controlled. This ensures minimal interference in the signal path resulting in an unsurpassed transparent audio performance.



The built-in CAMCO Audio Interface (CAI) on the Vortex series allows real time and dynamic monitoring and control of the amplifier. As the Vortex amp is microprocessor controlled it can remotely be set in true standby mode, where the main power supply is shut down but the signal and control section is still running.

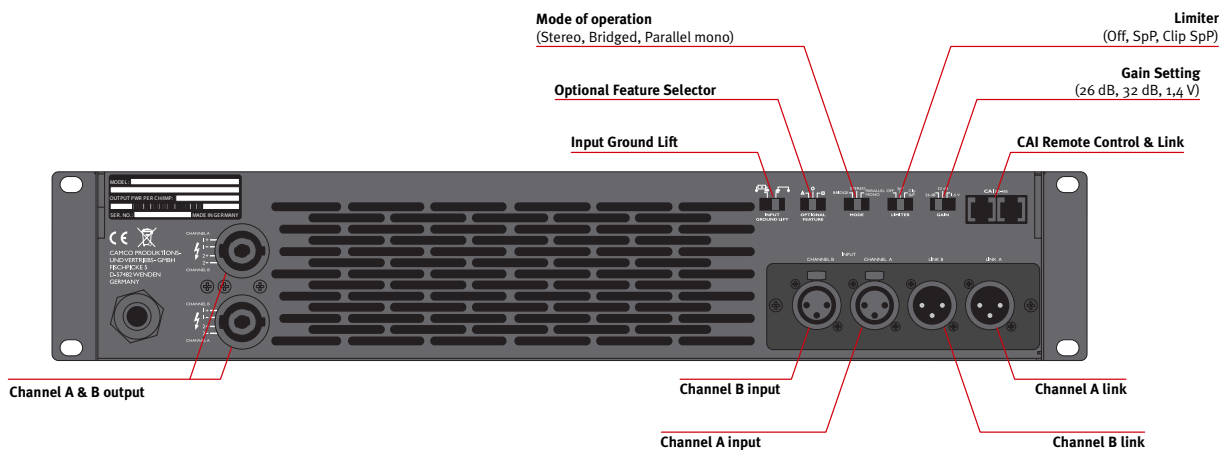


The ability to run in Parallel Mono is a unique CAMCO feature, which extends the amplifier's ability to run at extremely low impedances.



"Camco's new Vortex Series delivers highest performance in a compact and low-weight enclosure, which can ultimately be seen from the impressive performance/weight ratio of 453 watts/kg. However, what makes this result really exceptional are the excellent distortion values, the very good S/N ratio and the variety of sophisticated protections."

- Vortex test by Production Partner Magazine



Specifications:

		Vortex 4	Vortex 6	Vortex 200V
Stereo ¹⁾	16 Ω	500 W	730 W	1040 W
	8 Ω	930 W	1350 W	1880 W
	4 Ω	1570 W	2300 W	3100 W
	2 Ω	2300 W	3300 W	2600 W ²⁾
	Peak	2490 W	4090 W	4050 W
Mono	16 Ω ³⁾	1860 W	2700 W	3760 W
	8 Ω ³⁾	3140 W	4600 W	6200 W
	4 Ω ³⁾	4600 W	6600 W	5200 W ²⁾
	2 Ω ⁴⁾	3140 W	4600 W	6200 W
	1 Ω ⁴⁾	4600 W	6600 W	5200 W ²⁾
	Peak ⁴⁾	4980 W	8180 W	8100 W

Output Circuitry	bipolar, Class H
Frequency Response 8 Ω load, 1 dB below rated power	20 Hz - 20 kHz ± 0,15 dB
Input Impedance	40 kΩ balanced
Input Gain	selectable: 26 dB, 32 dB, or 1,4 V input sensitivity
Protection Circuits	inrush-current limitation, protection circuits against power on/off transients, temperature monitoring of transformers and heat-sinks, output DC protection, power transistor control, temperature dependent SOA protection, intelligent mains fuse protection
Limiter	3 step switchable peak-limiter
Fan	2 temperature dependent speed-controlled axial fans
Ground-Lift	input ground-lift switch on back panel
Indicators	LED's for ON, SIGNAL, CLIP, DC, High Temp, Output Current
Input Connectors	3-pin XLR, male and female per channel, pin 2 = in phase
Output Connectors ⁵⁾	One 4-pole SPEAKON connector for each output channel (bi-amping possible)
Modes Of Operation	STEREO, BRIDGE MONO and PARALLEL-MONO
Options	Extended User Interface / E.U.I. — modules for any kind of EQ
Signal To Noise-Ratio 20 Hz - 20 kHz, 8 Ω load	> 107 dB (unweighted) > 110 dB (A-weighted)
THD+N (typical) 20 Hz - 10 kHz, 8 Ω load, 10 dB below rated power	< 0,01 %
SMPTE (typical) 20 Hz - 20 kHz, 8 Ω load, 10 dB below rated power	< 0,01 %
Damping Factor 8 Ω load, 1 kHz and below	> 400
Net Weight	12,4 kg / 27,3 lbs (10,7 kg / 23,6 lbs for Vortex 3 Quadro)
Shipping Weight	15,0 kg / 33,1 lbs (13,5 kg / 29,8 lbs for Vortex 3 Quadro)
Dimensions (WxHxD)	483 x 88,9 x 436 mm / 19 x 3,5 x 17,2 inches (19", 2U)
Shipping Dim. (WxHxD)	540 x 135 x 615 mm (0,045 m ³) / 21,3 x 5,3 x 24,2 inches

1) All channels driven, 1 kHz, 1% THD @ 230 VAC 2) Peak Power, component tolerance dependent 3) Mono bridged 4) Parallel mono 5) different at Vortex 3 Quadro
Subject to technical alterations without prior notice.



CAMCO Q-Power Series is a range of 4 channel, high output power amplifiers. The Q-Power series has been designed to provide that, Powerful Pure Sonic Performance which is now so synonymous with the CAMCO brand name.

New Technology

The CAMCO Q-Power 10 introduces new class D amplifier technology offering smooth and responsive handling with massive power output while maintaining CAMCO's famous sonic integrity, the CAMCO Q-Power 6 and 4 both use class H technology, all models benefiting from the latest advances in CAMCO's SMPS technology, the resulting high power, lightweight units are at home in all professional applications.

Designed for flexibility of Use

With the introduction of the Q-Power series CAMCO aim to deliver simple, pure and reliable power for applications where cost and ease of use are paramount without lose of integrity.

Straight Forward Approach

CAMCO have paid attention to market requirements for a straight forward approach. In introducing the Q-Power Series CAMCO identified, key elements, such as power output, loading, AC power supply flexibility and connectivity. The result is three, outstanding power output options, across four channels, in a 19" 2 RU rugged case design, suitable for professional Installations, Theatre and Live Sound applications.

Features

- Dual Voltage SMPS with automatic voltage selection for 120 V / 230 V operation
- Two temperature controlled cooling fans
- Two switchable peak-limiter for channel A+B and C+D
- 100 V/70 V (Q-Power 10), 70 V (Q-Power 6) line operation
- CAMCO Switch Mode Power Supply technology
- 2500 W (Q-Power 10), 1500 W (Q-Power 6), 1000 W (Q-Power 4) max RMS output at 4 Ω per channel

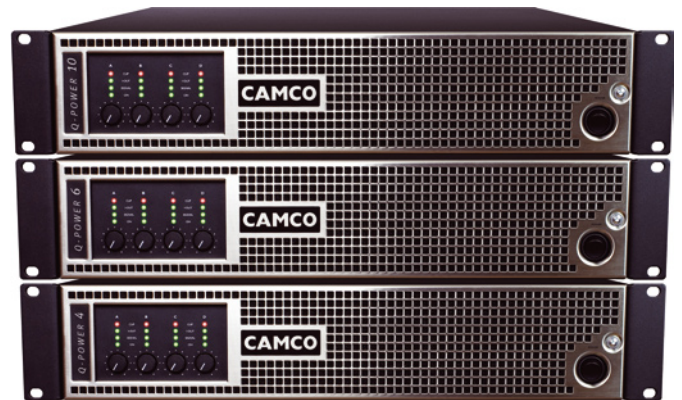
6 Years Warranty

CAMCO amplifiers renowned reliability is backed up by 6 years warranty from date of first purchase.

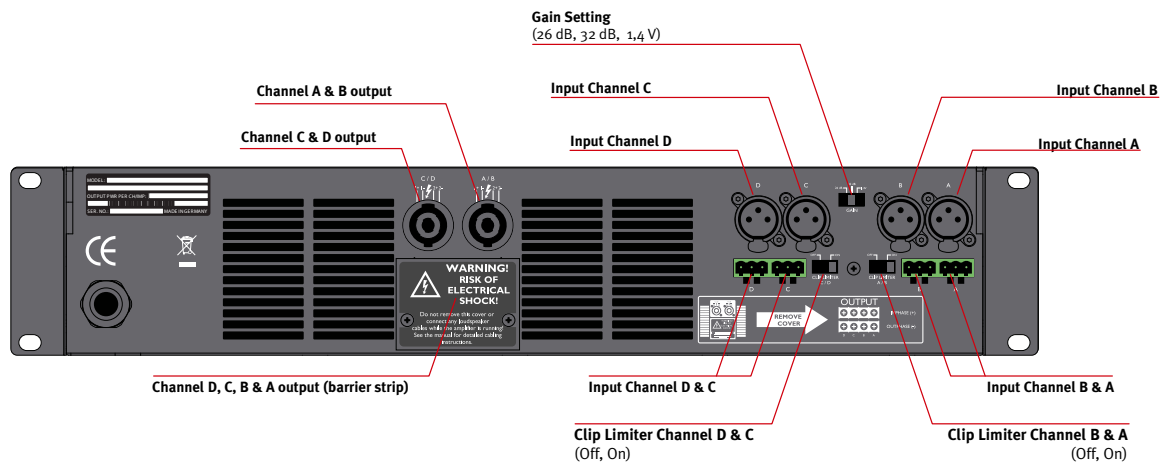
Along with ABCD channel identification, clear LED status indicators above each potentiometer indicate; Amp on, Signal present (this is red if in protect mode), Output current and clip status, all information is clear and precise. A gain control security cover is also provided.



Flexible connectivity as standard; the input section is supplied with both XLR and Phoenix connectors, while the output section is supplied with both Speakon and Barrier Strip connectors with cover.



The entire Q-Power Amplifier Range from Q 4 to Q 10



Specifications:

	Q-Power 4	Q-Power 6	Q-Power 10
Power per channel All channels driven @ 1kHz, THD < 1%	16 Ω	292 W	620 W
	8 Ω	528 W	1100 W
	4 Ω	840 W	1800 W
	4 Ω Max RMS	1050 W	2500 W
	70 V line operation	N/A	950 W
100 V line operation	N/A	N/A	625 W
Power per channel Single channel driven @ 1kHz, THD < 1%	16 Ω	302 W	620 W
	8 Ω	588 W	1350 W
	4 Ω	1100 W	2400 W
	4 Ω Max RMS	1200 W	1600 W
No. of channels	4	4	4
Max. Output Voltage	99 V _p / 198 V _{pp}	125 V _p / 250 V _{pp}	145 V _p / 290 V _{pp}
Output Circuitry	Class H	Class H	Class D
Signal To Noise-Ratio 20 Hz - 20 kHz, 8 Ω load	> 115 dB (A-weighted)	> 115 dB (A-weighted)	> 115 dB (A-weighted)
	> 112 dB (unweighted)	> 112 dB (unweighted)	> 112 dB (unweighted)
THD+N (typical) 20 Hz - 20 kHz, 8 Ω load, 6 dB below rated power	< 0,01 %	< 0,01 %	< 0,01 %
SMPTE 4:1 (typical) 60 Hz + 7kHz, 8 Ω load 8 dB below rated power	< 0,01 %	< 0,01 %	< 0,02 %
Damping Factor 8 Ω load, 1 kHz and below	> 350	> 350	> 600
Net Weight	10,6 kg / 23,4 lbs	10,6 kg / 23,4 lbs	11,5 kg / 25,4 lbs
Shipping Weight	12,6 kg / 27,8 lbs	12,6 kg / 27,8 lbs	13,5 kg / 29,8 lbs
Frequency Response 8 Ω load, 1 dB below rated power	20 Hz - 20 kHz ± 0,15 dB		
Input Impedance	15 kΩ balanced		
Input Gain	selectable: 26 dB, 32 dB or 1,4 V input sensitivity		
Protection Circuits	inrush-current limitation, protection circuits against power on/off transients, temperature monitoring of transformers and heat-sinks, output DC protection, power transistor control, temperature dependent SOA protection, intelligent mains fuse protection		
Limiter	two switchable peak-limiter for channel A+B and C+D respectively		
Fan	2 temperature dependent speed-controlled axial fans		
Indicators	LED's for ON, SIGNAL/PROTECT, CLIP, Output Current		
Input Connectors	3-pin XLR, male and female per channel, pin 2 = in phase / Phoenix Connectors, pin 1 = in phase, pin 2 = GND		
Output Connectors	Two 4-pole SPEAKON connectors / Barrier Strip with protection cover		
Operation Voltage	Dual Voltage SMPS with automatic voltage selection for 120 V / 230 V operation		
Dimensions (WxHxD)	483 x 88,9 x 419 mm / 19 x 3,5 x 16,5 inches (19", 2U)		
Shipping Dim. (WxHxD)	600 x 105 x 527 mm / 23,3 x 4,1 x 20,7 inches		
Accessories included	Gain pot security cover		

Specifications subject to technical alterations without prior notice.



Following on from the introduction of the CAMCO Q-Power series of 4 channel amplifiers, the D-Power series develops the range further with the introduction of six 2 channel models. The D-Power D05 250 W per channel, D1 500 W per channel, D2 1000 W per channel, the D3 1500 W per channel and the D4 2000 W per channel and D7 3300 W per channel. All six models have once again been designed to provide that, Powerful Pure Sonic Performance which is now so synonymous with the CAMCO brand name

New Platform

The D7/D4/D3/D2 models utilise a Hybrid Class H amplifier engine, while the D05 and D1 use the new UMAC™ Class-D technology, All offering smooth and responsive handling throughout the power range. All models benefit from the latest advances in CAMCO's SMPS technology, the resulting light weight units are at home in all professional applications. Use in combination with the Q-Power series or on their own, the D-Power series delivers pure and reliable power for applications where cost and ease of use are paramount without lose of integrity.

Designed for flexibility of Use

The introduction of the D-Power series now expands the choice and ability to refine system specification to exact requirements. D-Power power output specifications have been select to work as stand alone amplifiers or in combination with Q-Power series so that exact power formats can be matched, minimizing rack space and maintaining family function and design.

Simple Direct Approach

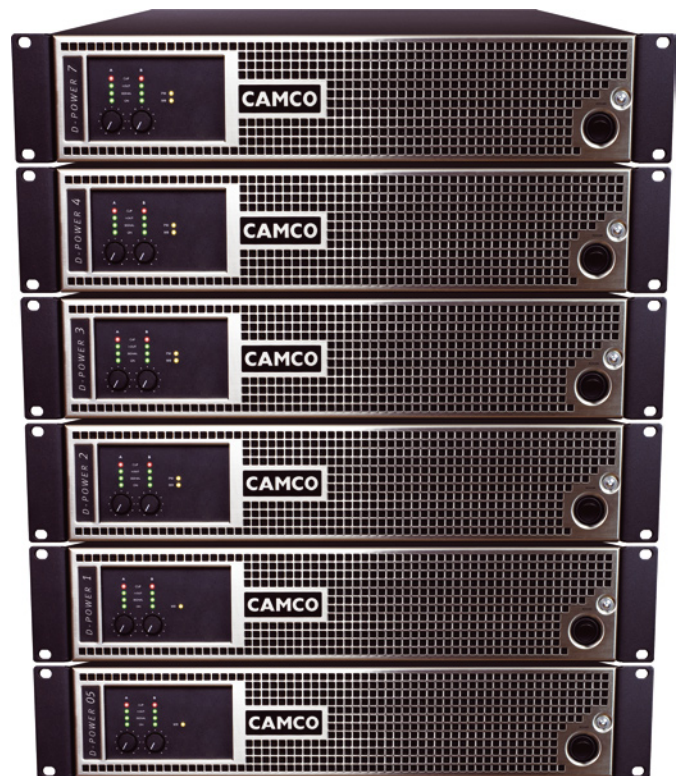
Once again paying great attention to market requirements for a strait forward approach, with the D-Power series CAMCO has identified key elements, such as power output range, flexible connectivity and interaction. The resulting six models are of rugged design and suitable for professional Installations, Theatre and Live Sound application.

6 Years Warranty

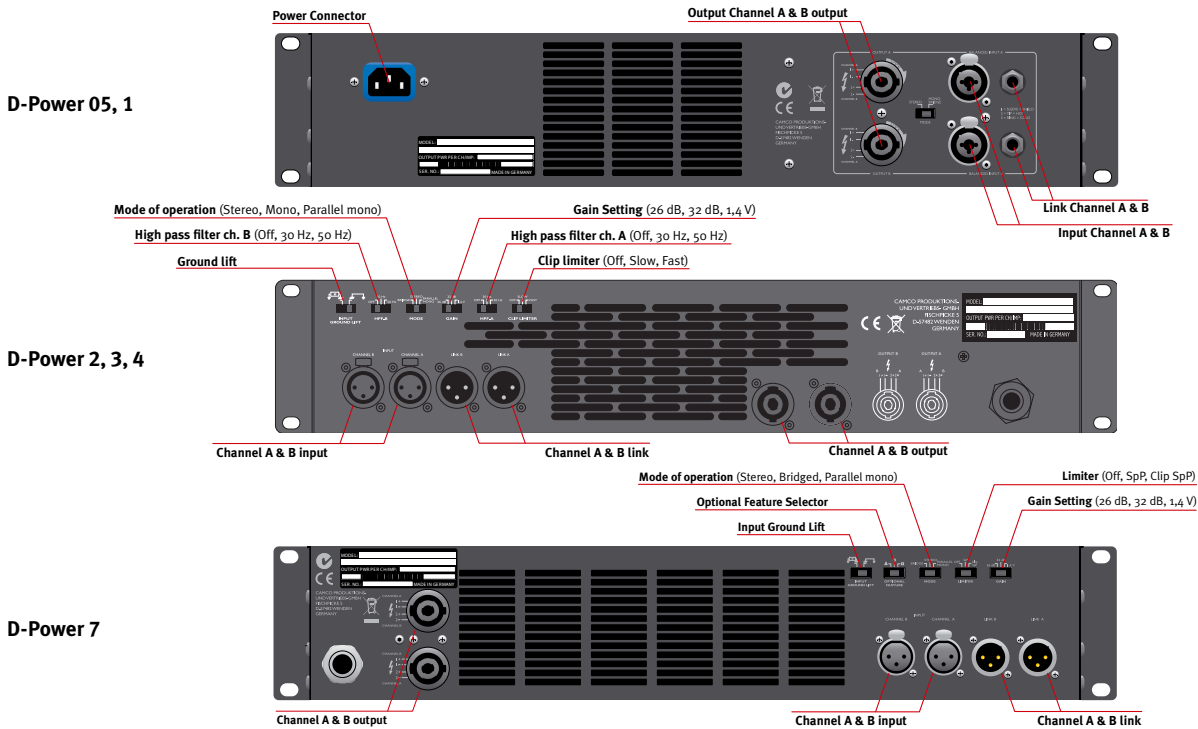
CAMCO amplifiers renowned reliability is backed up by 6 years warranty from date of first purchase.

Series Features

- Exceptional price to Watt ratio
- 6 year Warranty
- CAMCO sonic performance
- Complete series power range
- Optimal application flexibility



The entire D-Power Amplifier Range from D 05 to D 7

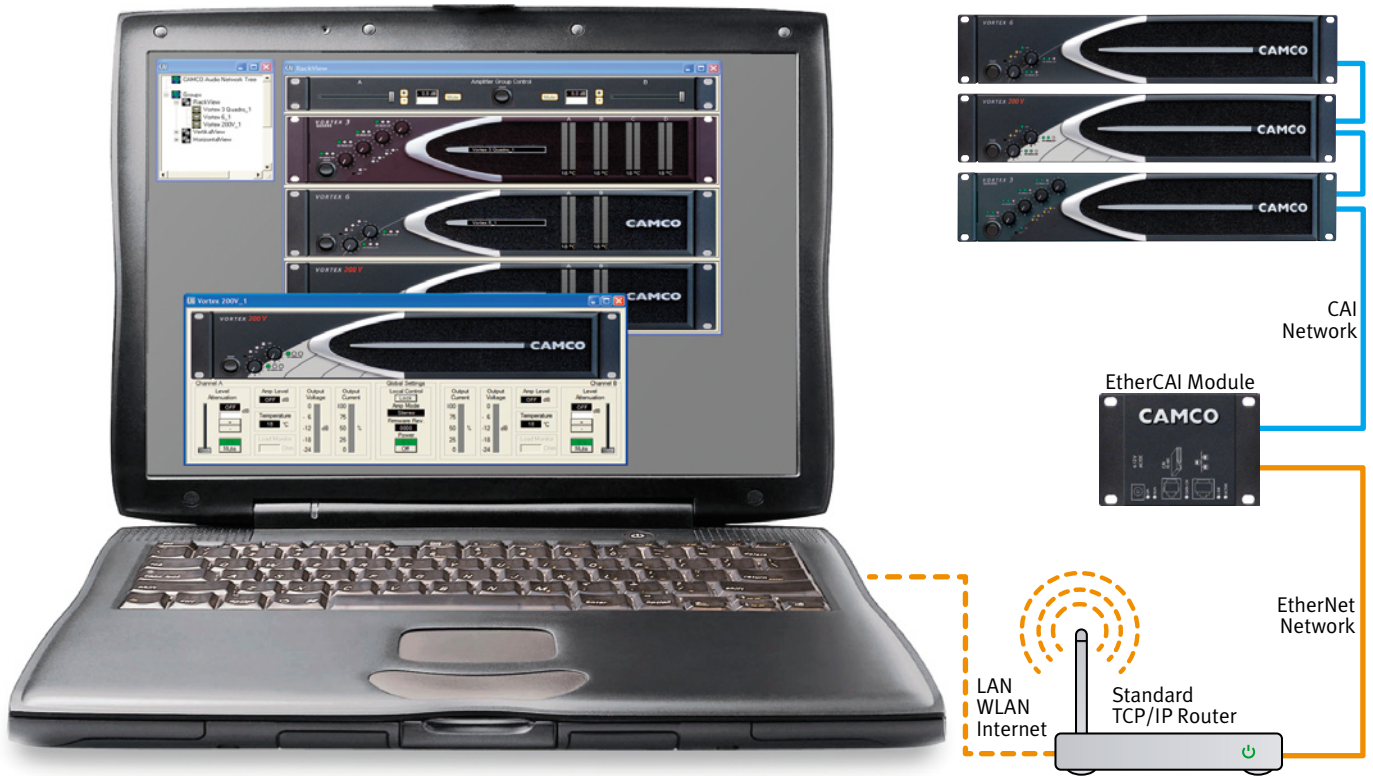


Specifications:

	D-Power 05	D-Power 1	D-Power 2	D-Power 3	D-Power 4	D-Power 7	
Stereo ¹⁾ All channels driven @ 1kHz, THD < 1%	16 Ω	70 W	125 W	370 W	480 W	730 W	
	8 Ω	125 W	250 W	700 W	920 W	1350 W	
	4 Ω	250 W	500 W	1200 W	1600 W	2300 W	
	2 Ω			1600 W	1600 W	1500 W	3300 W
Mono Bridge Single channel driven @ 1kHz, THD < 1%	16 Ω ²⁾	250 W	500 W	1400 W	1800 W	2200 W	2700 W
	8 Ω ²⁾	500 W	1000 W	2400 W	3200 W	3800 W	4600 W
	4 Ω ³⁾			1400 W	1800 W	2200 W	6600 W
	2 Ω ³⁾			2400 W	3200 W	3800 W	4600 W
Max. Output Voltage	55 V _p / 110 V _{pp}	80 V _p / 160 V _{pp}	110 V _p / 220 V _{pp}	125 V _p / 250 V _{pp}	140 V _p / 280 V _{pp}	160 V _p / 320 V _{pp}	
Output Circuitry	Class D		Class H				
Signal To Noise-Ratio 20 Hz - 20 kHz, 8 Ω load	> 113 dB (A-weighted) > 111 dB (unweighted)		> 115 dB (A-weighted) > 110 dB (unweighted)			> 110 dB (A) > 107 dB (unw.)	
THD+N (typical) 20 Hz - 20 kHz, 8 Ω, -10 dB rated power	< 0,01 %						
Damping Factor 8 Ω load, 1 kHz and below	> 1000		> 400				
Frequency Response 8 Ω load, 1 dB below rated power	20 Hz - 20 kHz ± 0,2 dB						
Input Impedance	7 kΩ balanced		15 kΩ balanced			40 kΩ balanced	
Input Gain	26 dB		selectable: 26 dB, 32 dB or 1,4 V input sensitivity				
Protection Circuits	incrush-current limitation, protection circuits against power- on/off transients, temperature monitoring, output DC protection, temperature dependent power transistor SOA protection, intelligent mains fuse protection						
Limiter	Peak-limiter		3 step switchable peak-limiter				
Indicators	LED's for ON, SIGNAL/PROTECT, CLIP, Output Current						
Net Weight	5,2 kg / 11,4 lbs		9,4 kg / 20,7 lbs			12,4 kg / 27,3 lbs	
Shipping Weight	6,6 kg / 14,5 lbs		11 kg / 24,3 lbs			15,0 kg / 33,1 lbs	
Dimensions (WxHxD)	483 x 88,9 x 252 mm / 19 x 3,5 x 9,9 inches (19", 2U)		483 x 88,9 x 419 mm / 19 x 3,5 x 16,5 inches (19", 2U)			483 x 88,9 x 436 mm 19 x 3,5 x 17,2 in.	
Shipping Dim. (WxHxD)	540 x 135 x 305 mm / 21,2 x 5,3 x 12 inches		600 x 105 x 527 mm / 23,3 x 4,1 x 20,7 inches			540 x 135 x 615 mm 21,3 x 5,3 x 24,2 in.	
Accessories	Gain pot security cover available						

1) All channels driven, 1 kHz, 1% THD @ 230 VAC 2) Mono bridged 3) Parallel mono
All specification subject to change without notice

Remote Control



CAMCO Vortex series amplifiers are supplied with a remote control facility as standard (Camco Amplifier Interface - CAI). The Tecton series can be upgraded for remote control via the use of the controller-module or a combined controller / network-module.

Cost Efficient Network

The CAI interface is a cost efficient solution, which via a RJ11 connector handles all the amplifiers settings and status readings. Up to 32 amplifiers can be daisy chained together into a CAI network (blue lines on the illustration above).

Ethernet & TCP/IP Compatible

The EtherCAI module is a network-bridge between the CAI network (blue lines) and a standard TCP/IP & Ethernet network (orange lines) which together makes an EtherCAI network (blue + orange lines). Thus remote control is possible through LAN, WLAN and the Internet.

Remote Control of Infinite Amplifiers

Several EtherCAI modules can be connected to the same standard Ethernet router. Thus there is no upper limit to the number of amplifiers which can be remote controlled by a PC over an EtherCAI network.

User-friendly Software

The remote control software provides a user-friendly and intuitive graphical user interface, which enables remote control of all

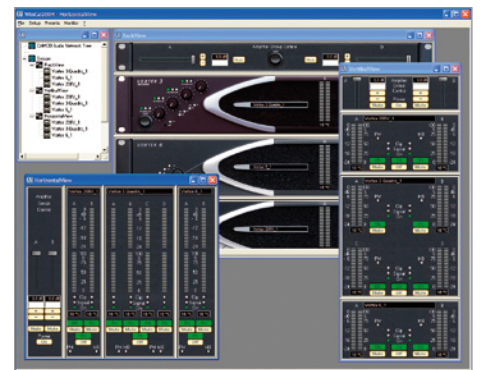
amplifiers connected to the EtherCAI network. All registered users of CAMCO amplifiers can receive CAMCO's remote control software free of charge. Please contact your CAMCO dealer for further information.

Control of All Parameters

The CISUS software provides access to all the amplifiers front plate read outs, amongst others: Signal, Clip and Protect. Additionally the amplifiers mute function is also accessible. Furthermore CISUS offers peak meter readouts of the output stages voltage and current as well as dynamic readout of the amplifiers temperature.

The CISUS remote control software offers different views of amplifiers in a group, for easy overview and control. Illustrated here vertical, horizontal and rack-view of the same amplifier group.

Amplifier groups and views are easy to define by drag'n'drop functionality in the network tree (upper left corner).



Controller / Modules

CAMCO's new controller-modules allows the upgrade of a CAMCO amplifier into a Universal Controller Amplifier (UCA), with the option for advanced audio network and remote control.

Loudspeaker Management System

The controller-module offers a complete loudspeaker management system. Per channel it offers 30 fully parametric EQ's, delays, IIR-filters, X-over up to 10th order and 2 independent limiters.

Audio Network, Your choice

The controller-module is available in three input formats. The choice is yours. Either, analog, EtherSound or CobraNet. Total compatibility with today's standards within digital audio networks.

Remote Control as Standard

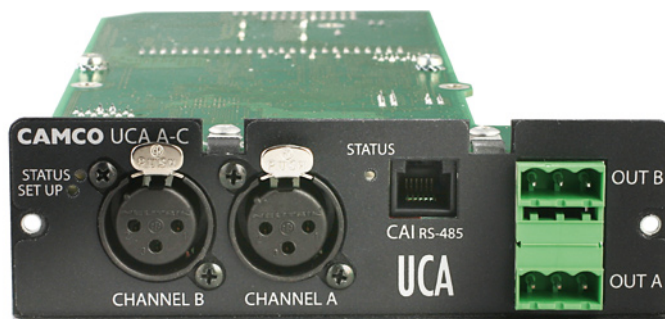
As standard the controller-module offers access to the remote control of the amplifier. For controller-modules with audio network input, remote control can be achieved via this network, thus avoiding two cable lines to the amplifiers.

Controller Software

Access, configuration and control of the controller-modules are achieved via the controller software, which also functions as the remote control software. Software is free for all registered users; please see your local CAMCO dealer for further information.

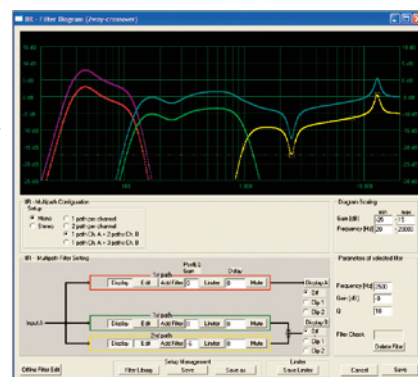
Linear Frequency and Phase Response

A unique feature is the possibility to use advanced FIR-filter settings by downloading speaker parameters from an accredited



The powerful controller DSP offers up to 4 paths in a multi-path routing structure. This allows emulation of passive X-over filters, thus making it possible to control EQ, limiter and delay settings for individual speaker drivers in a passive X-over system.

The advanced thermo and peak limiter functions can be combined with the amplifier's limiter, thus always maximising power output of the entire system with optimal protection.



measurement system. This makes it possible to achieve a linear frequency and phase response from any loudspeaker or loudspeaker system. Please contact CAMCO for further information.

Specifications:

	UCA-X-AN	UCA-X-ES	UCA-X-CN*
Audio Network	-	EtherSound	CobraNet
Input Connector	2 x 3 pin XLR	RJ45 EtherCon	RJ45 connector
No. of Channels	2	2 of 64	2 of 64
Remote Control	Via CAI port	Via audio network	Via audio network
Software	CISUS	CISUS	CISUS
AD Converter	127 dB dynamic range	-	-
Max. input level	22 dBu	-	-
Sample Rate	48 kHz	48 kHz	48 kHz
Analogue outputs, internal			
Converter:	24 Bit with Delta/Sigma converters		
Output voltage:	1,4 V RMS, optimised for Vortex and Tecton amps		
Dynamic range:	114 dB typical, optimised for Vortex and Tecton amps		
Latency:	1 ms from input to analogue output		
Routing & gain:	Routing of all inputs. Gain adjustment on input and output of UCA Module		
Limiters per channel:	Independent limiters, adjustable in threshold and release time.		
Delay:	Up to 1,8 sec 21 usec increments		
Filters & EQ per channel:	Graphic EQ-settings. Drag-and-drop control of filter curves. 30 fully parametric EQs, adjustable in frequency, amplitude, quality and characteristic. X-over up to 10th order. shelving filters		
Speaker protection:	Foresight limiter with "controlled overshoot" for utilisation of the impulse reserves of the amplifier with regards to the loudspeaker's thermal equivalent circuit diagram		
FIR-filters:	Possibility for high-precision FIR-filtering via the accredited measurement systems. Optimisation to a designated transfer function.		

* In preparation

Touring & Live



Pavarotti and Sandy Lam, Hong Kong

Theatre & Installation



Holiday On Ice, Germany

Special Events & AV



MTV Awards, Singapore Indoor Stadium, Singapore

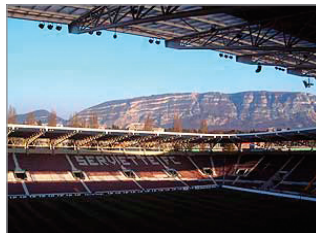
Houses of Worship



Oregon Church, USA



"The White Stripes", Australia/Asian Tour



Geneva Stadium, Switzerland



Four Hills Tournament Austria



Lighthouse Evangelism Church, Singapore



UK, Bob Dylan, Finsbury Park Fleadh



Convention Centre of Bordeaux, France



Herbalife's 25th anniversary gala, featuring Sir Elton John, USA



Dallas High Point Church, USA



Oasis, stadium shows in the UK



"Marilyn Monroe" musical, Munich Germany



Ringo Starr, Liverpool's Celebration as European City of Culture, UK.



St. Pius Church, Switzerland

CAMCO

Produktions- und Vertriebs-GmbH
Fischpicke 5, D-57482 Wenden-Gerlingen
Germany

Tel.: +49 (0)2762 408-0

Fax: +49 (0)2762 408-10

Email: postmaster@camco.de

Web: www.camcoaudio.com