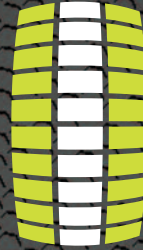


STM



Scale
Through
Modularity





Finally.

A system that works the way you work.

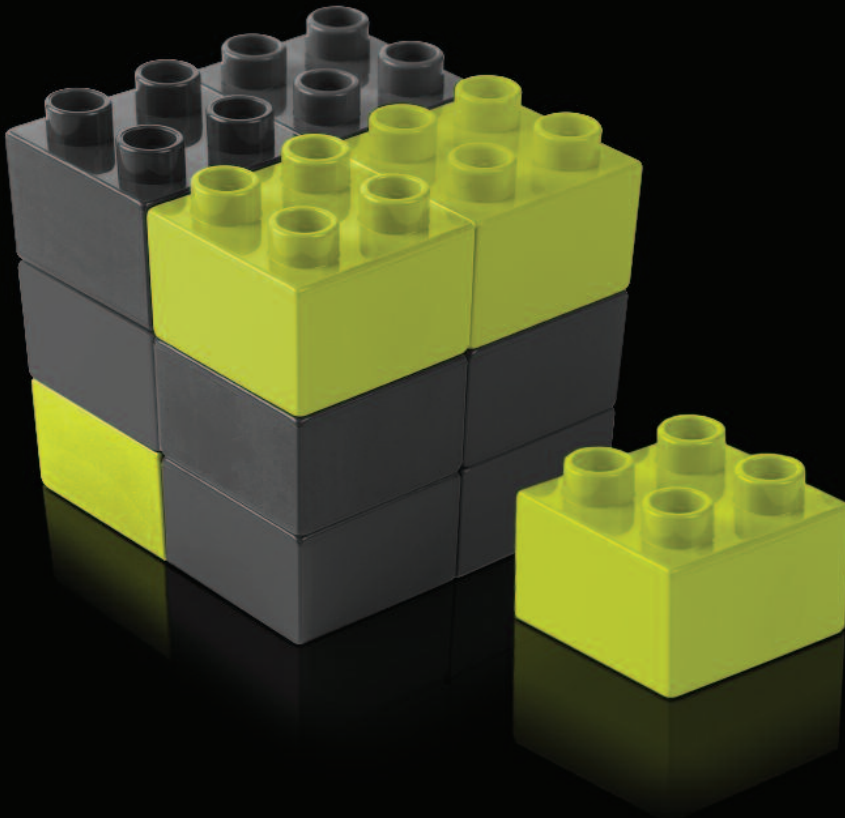
For too long now, the business of a sound rental company has been dictated by system manufacturers. You need one type of system to be in the touring market, another for corporate jobs, and so on. It all adds up to a lot of boxes that often spend more time in the warehouse than they do on the road.

STM changes all that. The concept of Scale Through Modularity delivers a new level of versatility, enabling contractors to design a wide range of systems from just four core modules. And in applications large and small, these systems can significantly outperform existing solutions.

Of course increased versatility brings a welcome improvement in return on investment. But with STM, that's just the start. From system storage and configuration, through transportation and rigging, to wiring and amplification, STM delivers important operational and logistical cost savings at every stage of the process.

4 core modules.

Think of them as the building blocks
for every system you'll ever need.



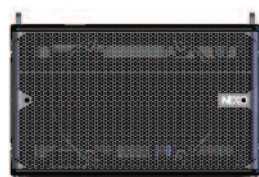
Any size of STM system can be configured from a combination of four small, powerful and proportionally-sized modules.

STM M46 Main Module



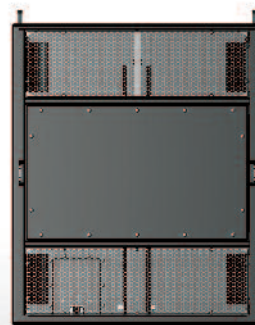
- 4 x 6.5 inch LF/MF Drivers
- 4 x HF Compression Drivers
- 145dB peak SPL
- Frequency response: 85Hz-20kHz
- H350mm/W575mm/D715mm
- 55Kg/121lb
- Dispersion 90° H x 0-10°V

STM B112 Bass Module



- 1 x 3000W +/- 3cm excursion 12 inch LF Driver
- 141dB peak SPL
- Frequency response: 63Hz-200Hz
- H350mm/W575mm/D715mm
- 55Kg/121lb

STM S118 Sub Module



- 1 x 18 inch LF Driver
- 143dB peak SPL
- Frequency response: 25Hz-85Hz
- H700mm/W575mm/D715mm
- 85Kg/187lb
- Omni or cardioid modes

STM M28 'Omni' Module



- 2 x 8 inch LF Drivers
- 4 x 4 inch MF Drivers
- 1 x HF Compression Driver
- 140dB peak SPL
- Frequency response: 60Hz-20kHz
- H233mm/W575mm/D715mm
- 38Kg/84lb
- Dispersion 120° H x 0-15°V

From a simple ground stack to a massive stadium system, STM makes it quick and easy to 'clip together' the systems you need for any job. One day it could be for an event audience of 1000. The next day for 100,000.

STM can be flown one wide, two wide or three wide on a single bumper. The facility to add a third hang of Bass modules creates a system of unrivalled power with massive LF headroom.



A simple ground stack is perfect for small applications.



A single column can contain Main, Bass, Sub and Omni modules as necessary.



A double column of Main and Bass modules is smaller and more powerful than competitive line arrays.



Adding a second hang of Bass modules in a Bass/Main/Bass triple column creates a system of unrivalled power, with massive low frequency headroom.



Total versatility makes it possible to create a large-scale stadium configuration that no other system can match.

Reduced operating costs through better design.

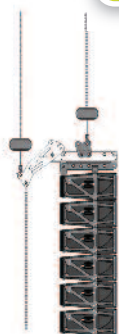


In developing STM, NEXO considered not only the versatility and performance of the system in use, but also its efficiency of operation at every stage of the live sound rental process.

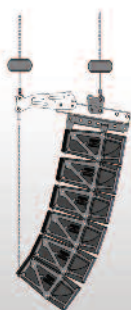
Modular dollies, road-ready casing and universal amp racks deliver significant savings in operational costs, further enhancing return on investment.

One-man rigging

Innovative PistonRig™ and REDLock™ rigging enables any size of system to be flown safely by one person. Using a compression-mode rigging method, the system remains completely flat during rigging, and requires no lifting or pushing.



System stays flat during set-up



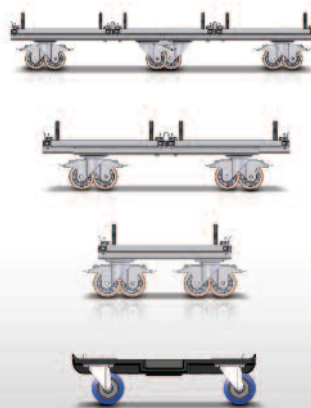
Bumper and array angles realised after lifting



- PistonRig™ allows pre-setting of inter-cabinet angle values
- REDLock™ handle locks front rigging points from rear of cabinet
- All adjustments made from one position at rear of cluster



Modular dollies make it easy to configure and move any size of system



Dollies, bumpers and wheelboard

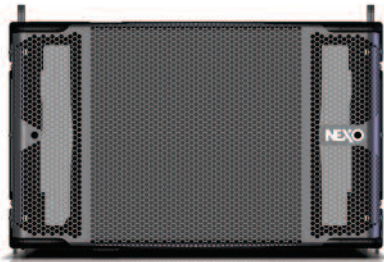
A clever system
requires intelligent power.





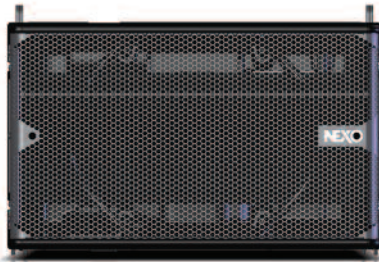
NEXO Universal Amp Rack

The NEXO Universal Amp Rack feeds 12 STM modules in any combination in groups of 3. Comprising NXAMP4x4 amplifiers, 2 digital input patches, 2 digital output patches and network card, the NUAR forms a compact, powerful and scalable amplification solution for STM systems of any size.



Injection-moulded high-power cabinet with innovative components for enhanced performance. Flat-membrane drivers ensure completely even and full-range coverage over entire 90° horizontal dispersion. HF frequency range remains completely linear, using Kepton Polymer diaphragms that enhance tonal response and long throw.

- 4 x 6.5 inch LF/MF Drivers
- 4 x HF Compression Drivers
- 145dB peak SPL
- Frequency response: 85Hz-20kHz
- H350mm/W575mm/D715mm
- 55Kg/121lb
- Dispersion 90° H x 0-10° V



Injection-moulded bass cabinet featuring a Neodymium high excursion 3000W 12" bass driver with 4" voice coil. It has the same format – dimensions, weight, gravity centre – as the M46. The hybrid horn-loaded design maximizes the efficiency of the driver, delivering 6dB more than a standard front-loaded driver in this frequency range.

- 1 x 3000W +/- 3cm excursion 12 inch LF Driver
- 141dB peak SPL
- Frequency response: 63Hz-200Hz
- H350mm/W575mm/D715mm
- 55Kg/121lb

STM M46 Main Module

Specifications

STM M46 with NXAMP 4x4

Frequency Response [a]	85Hz – 19kHz ±3dB
Usable Range @-6dB [a]	80Hz – 20kHz
Sensitivity 1W @ 1m [b]	110dB SPL Nominal
Nominal Peak SPL @ 1m [b]	145dBPeak
Dispersion [c]	90° Horizontal x 0-10° vertical
Crossover Frequency	1.5 kHz
Nominal Impedance	LF-MF:16Ω (12 Ω min) – HF: 16Ω (12 Ω min)
Amplified Controller	NXAMP4x4 - 3xSTM M46 in parallel on 2 NXAMP4x4 channels - 2x4000W/2Ω

PRODUCT FEATURES

Components :	LF-MF: 4 x 6.5" (17cm), 16 Ω flat membrane high excursion drivers. HF: 4 x 2.5" voice coil, 1.4" throat Neodymium 16 Ω drivers, Kepton Polymer diaphragm
Height x Width x Depth	350 x 575 x 715 mm – 13.78" x 22.64" x 28.15"
Weight : Net	55 kg – 121 Lb
Connectors	2 x NL8-MDV Speakon 8 poles (in/out) & 1 x NLT4-MDV Speakon 4 poles (to STM S118 and B112)
Construction	PU Composite Low Density – Polyurethane water based black coating
Fittings:	Handles 3 handles (2 sides and 1 rear)
	Front Perforated Dark Grey Metal Grille
Rigging	Integral 3 points flying system. Intercabinet angle adjustments from 0.2° to 10° in logarithmic steps.

SYSTEM OPERATION

Electronic Controller	The NEXO NXAMP4x4 presets are precisely matched to the STM Series cabinets and include sophisticated protection algorithms. Using STM Series cabinets without a properly connected NEXO NXAMP4x4 will result in poor sound quality and can damage components.
SubBass	STM S118 extends system low frequency response down to 25Hz
Speaker Cabling	1-/1+; SUB - 2-/2+; LF – 3-/3+; LF-MF 4-/4+; HF

STM B112 Bass Module

Specifications

STM B112 with NXAMP 4x4

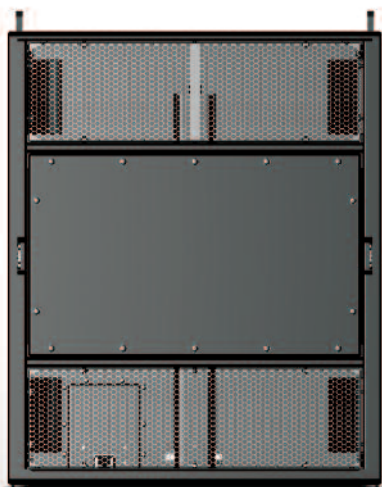
Frequency Response [a]	63Hz – 200Hz ±3dB
Usable Range @-6dB [a]	55Hz – 250Hz
Sensitivity 1W @ 1m [b]	107dB SPL Nominal
Nominal Peak SPL @ 1m [b]	141dB Peak
Nominal Impedance	16Ω (12 Ω min)
Amplified Controller	NXAMP4x4 - 3xSTM B112 in parallel on 2 NXAMP4x4 bridged channels - 8000W/4Ω

PRODUCT FEATURES

Components :	LF: 1 x 12" (30cm) 3000W high excursion Neodymium 16 Ohms driver.
Height x Width x Depth	350 x 575 x 715 mm – 13.78" x 22.64" x 28.15"
Weight : Net	55 kg – 121 Lb
Connectors	2 x NLT4-MDV Speakon 4 poles (in/out)
Construction	PU Composite Low Density – Polyurethane water based black coating
Fittings:	Handles 3 handles (2 sides and 1 rear)
	Front Perforated Dark Grey Metal Grille
Rigging	Integral 3 points flying system. Intercabinet angle adjustments from 0.2° to 10° in logarithmic steps.

SYSTEM OPERATION

Electronic Controller	The NEXO NXAMP4x4 presets are precisely matched to the STM Series cabinets and include sophisticated protection algorithms. Using STM Series cabinets without a properly connected NEXO NXAMP4x4 will result in poor sound quality and can damage components.
SubBass	STM S118 extends system low frequency response down to 25Hz
Speaker Cabling	1-/1+; SUB - 2-/2+; LF



Subbass cabinet featuring a Neodymium high excursion 3000W 18" driver. A bandpass load ensures SPL output equivalent to conventional dual 18" subbasses. Same width, double the height of M46 main cabinet, double height of main cabinet so the S118 can be flown in the array or ground-stacked in line. Can be run in omnidirectional or cardioid sub mode.

- 1 x 18 inch LF Driver
- 143dB peak SPL
- Frequency response: 25Hz-85Hz



Injection-moulded all-purpose loudspeaker cabinet which fulfils the role of downfill, providing 120° of horizontal dispersion and 0° to 15° splaying angle between modules. Same width as M46, 2/3 height, the M28 can also be used independently from M46 or B112.

- 2 x 8 inch LF Drivers
- 4 x 4 inch MF Drivers
- 1 x HF Compression Driver
- 140dB peak SPL
- Frequency response: 60Hz-20kHz
- H233mm/W575mm/D715mm
- 38Kg/84lb

As part of a policy of continual improvement, NEXO reserves the right to change specifications without notice.

[a] Response curves & data : Half-Space Far Field for the STM S118 & B112 + NXAMP4x4.
 [b] Sensitivity & Peak SPL data : these will depend on spectral distribution and crest factor of program material. Measured with band limited Pink Noise. Data are for speaker + amplified controller. Peak SPL is at clipping of NXAMP4x4.

[c] Directivity curves & data : obtained by computer treatment on off axis response curves.

STM S118 Sub Module

Specifications

STM S118 with NXAMP 4x4

Frequency Response [a]	27Hz – 85Hz ±3dB
Usable Range @-6dB [a]	23Hz – 100Hz
Sensitivity 1W @ 1m [b]	109dB SPL Nominal
Nominal Peak SPL @ 1m [b]	143dB Peak
Nominal Impedance	16Ω (12 Ω min)
Amplified Controller	NXAMP4x4 - 3xSTM S118 in parallel on 2 NXAMP4x4 bridged channels - 8000W/4Ω

PRODUCT FEATURES

Components :	LF: 1 x 18" (46cm) 3000W high excursion Neodymium 16 Ohms driver.
Height x Width x Depth	700 x 575 x 715 mm – 27.56" x 22.64" x 28.15"
Weight : Net	85kg – 187Lb
Connectors	2 x NLT4-MDV Speakon 4 poles (in/out)
Construction	Baltic birch ply finished with structured black coating
Fittings:	Handles 6 handles (3 per side)
	Front Perforated Dark Grey Metal Grille
	Rigging Integral 3 points flying and locking system.

SYSTEM OPERATION

Electronic Controller	The NEXO NXAMP4x4 presets are precisely matched to the STM Series cabinets and include sophisticated protection algorithms. Using STM Series cabinets without a properly connected NEXO NXAMP4x4 will result in poor sound quality and can damage components.
Speaker Cabling	1-/1+: SUB - 2-/2+: LF

STM M28 'Omni' Module

Specifications

STM M28 with NXAMP 4x4

Frequency Response [a]	60Hz – 19kHz ±3dB
Usable Range @-6dB [a]	55Hz – 20kHz
Sensitivity 1W @ 1m [b]	106dB SPL Nominal
Nominal Peak SPL @ 1m [b]	140dBPeak
Dispersion [c]	120° Horizontal x 0-15° vertical
Crossover Frequency	LF-MF: 300Hz (Active) – MF-HF: 2.2 kHz (Passive)
Nominal Impedance	LF: 8 Ω (6 Ω min) - MF/HF: 8 Ω (6 Ω min)
Amplified Controller	NXAMP4x4 - 3xSTM M28 in parallel on 2 NXAMP4x4 channels - 2x4000W/2Ω

PRODUCT FEATURES

Components :	LF: 2 x 8" (20cm) 8 Ω high excursion drivers MF: 4 x 4" (10cm) 8 Ω flat membrane drivers HF: 1 x 2.5" voice coil, 1.4" throat Neodymium 16 Ω drivers, Kepton Polymer diaphragm
Height x Width x Depth	233 x 575 x 715 mm – 13.78" x 22.64" x 28.15"
Weight : Net	38 kg – 84 Lb
Connectors	2 x NLT4-MDV Speakon 4 poles
Construction	PU Composite Low Density – Polyurethane water based black coating
Fittings:	Handles 3 handles (2 sides and 1 rear)
	Front Perforated Dark Grey Metal Grille
	Rigging Integral 3 points flying system. Intercabinet angle adjustments from 0.2° to 15° in logarithmic steps.

SYSTEM OPERATION

Electronic Controller	The NEXO NXAMP4x4 presets are precisely matched to the STM Series cabinets and include sophisticated protection algorithms. Using STM Series cabinets without a properly connected NEXO NXAMP4x4 will result in poor sound quality and can damage components.
SubBass	STM S118 extends system low frequency response down to 25Hz
Speaker Cabling	1-/1+: LF - 2-/2+: MF/HF

NXAMP 4x4

Powered TDController

NEW DUAL-VOLTAGE VERSION



The complete integration of power and control

NXAMP 4X4 is an ultra-flexible, true four-channel digital processing and amplification system delivering an integrated solution for any NEXO speaker configuration. NXAMP technology is far more sophisticated than simply a bundled power amplifier and loudspeaker controller. The application of advanced DSP allows multiple digital sense lines to protect simultaneously the amplifier and the connected speakers.

The NXAMP 4x4 uses a unique dual mains cord, feeding the power supplies with almost twice the power of that in a conventional amplifier design, while being extremely easy to connect to any single or multi-phase mains supply. To absorb this enormous current, the NXAMP4x4 uses four independent, high-power, full resonant power supplies working in opposite phase to cancel noise and lower EMC.

Yamaha EEEngine technology delivers maximum efficiency in drive performance and power, with the sonic purity of conventional class AB amplifiers, and heat dissipation equivalent to class D.

Dual-core DSPs take care of amplifier protection and optimisation, while raising the processing standard of NEXO proprietary loudspeaker management technology to higher levels of sonic performance and reliability.

Additional features include full computerless front-panel operation and on-the-fly independent loudspeaker per output selection or load monitoring through GPIO or Ethersound™.

New Features

New dual-voltage version

Optional Dante™ and EtherSound™ network cards

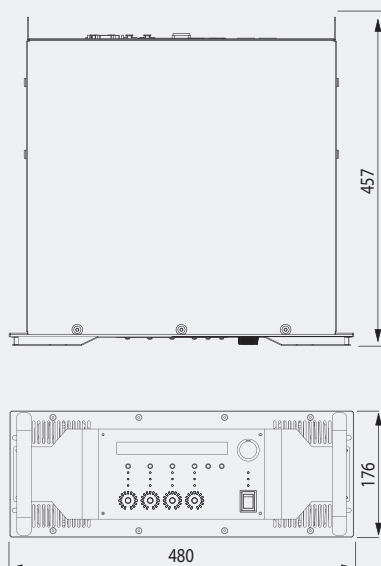
New Firmware LOAD 3.0

- Set up selection per channel
- Linear phase on all set-ups
- All systems compatible 20Hz-20kHz

DIGITAL NXAMP
TD CONTROLLER

Specifications

Dimensions



POWER SPECIFICATIONS FOR NXAMP4x4

Number of channels	4x amplifiers channels, 2 by 2 bridgeable
Max. output voltage (no load)	4x 200 Volts
Max. output power (4 channels mode /8 Ohms load per channel)	4x 1900 Watts
Max. output power (4 channels mode /4 Ohms load per channel)	4x 3300 Watts
Max. output power (4 channels mode /2 Ohms load per channel)	4x 4000 Watts
Max. output power (2 channels mode /8 Ohms load per channel)	2x 6800 Watts
Max. output power (2 channels mode /4 Ohms load per channel)	2x 8000 Watts
Power consumption (Standby)	20 Watts
Power consumption (Idle)	120 Watts

INPUT TO POWER OUT SPECIFICATIONS

Frequency response	+0.5 dB from 10 Hz to 20 KHz
Input impedance / Max. level	20 K / +28 dBu
Dynamic range / TDH + N	105 dB unweighted / Typical 0.1% on a flat setup
Latency	500 us on a flat setup
A to D Converters	Audio and current/voltage sense lines : 24 bits @ 48 KHz
Processing	Two dual-core 24 bits fixed point DSP with 56 bits accumulator

BACK PANEL FEATURES

Analog audio inputs	4x balanced analogue inputs on XLR3 with a second XLR3 for link
Power outputs	4x Neutrik Speakon NL-4 outputs
RS232 port	1x DB-9 connector for firmware upgrade and accessories connection
GPIO port	1x DB-25 connector with 5x Global Purpose Inputs and 8x Global Purpose Outputs
Expansion slot	For networking audio cards, 4x digital audio inputs and remote control
Mains sockets	2x Neutrik Powercon NAC3 (2x 16 A) or NAC3-HC (2x 32 A) depending on model

USER INTERFACE AND CONTROLS

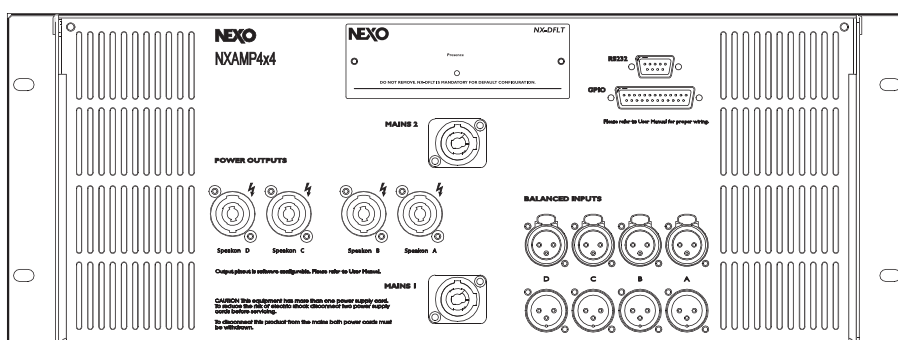
Front panel buttons and knobs	On/Off Mains switch, Select Wheel, 2x Menus buttons, 4x Select and 4x Mute buttons
Display	40 characters by 2 lines LCD display with LED backlight.
Global status display	Power, Standby and Amp Protect LEDs.
Speakers/Amp status display	Per channel, output current sensing, speaker protection and channel soft clip.

DIMENSIONS AND CERTIFICATIONS

Dimensions	4U 19" Rack - 457 mm (18") Depth
Weight	24.5 Kg (49 lbs) net
Electrical Safety Certification	cETLus, CB (CE)
EMC Certification	CE, FCC
Green status	Compliant with ROHS directive

ORDERING INFORMATION

NXAMP4x4 (for 110/120 V mains)	NX.AMP4x4U	(1 x NXAMP4x4U, 1 x Quick Start, 2 x US power cords)
NXAMP4x4 (for 220/240 V mains)	NX.AMP4x4C	(1 x NXAMP4x4C, 1 x Quick Start, 2 x CH power cords)
NXAMP4x4 (dual voltage mains)	NX.AMP4x4W	(1 x NXAMP4x4W, 1 x Quick Start)
NXAMP4x4 handles kit	NX.AMP4x4-HAND	(2 x NXAMP4x4 handles w screws)



DPU

Digital Patch Unit



Key Features

- Intelligent output patch panel offering digital communication with NXAMPs.
- Provides automatic output speakons wiring regarding the configuration of the NXAMP.
- Four individual LCD displays for easy labelling of the output speakons.
- Fully redundant design for maximum safety, including dual power socket and dual universal power supplies.
- Plug and play operation, entirely driven by the host NXAMP.

Specifications

ROUTING FEATURES

Routing Matrix	Route any of the four input channels to one or several Speakon pins pairs on the front.
----------------	---

FRONT PANEL FEATURES

Power outputs	4 Neutrik Speakon-4 and 2 Neutrik Speakon-8.
LCD Displays	4 LCD displays, 2 x 8 characters.

BACK PANEL FEATURES

NXAMP power inputs	2 Neutrik Speakon-4 for connecting the NXAMP Powered TDcontroller.
NXAMP interface	RS232 interface for communication with the NXAMP Powered TDcontroller.
Mains inputs	2 IEC connectors with security latch.

DISPLAYED INFORMATION

When muted	Connected speaker name, speaker pin-out, connected NXAMP inputs names.
When unmuted	Connected speaker name, output meter.

GENERAL SPECIFICATIONS

Power supply	Fully redundant, dual universal 100 ~ 240 Volts, 50 or 60 Hz, 25 Watts
Dimensions	1U 19" Rack - 248 mm (10") Depth
Weight	4.7 Kg (10.4 lbs) net
Electrical Safety Certification	cETLus, CB (CE)
EMC Certification	CE, FCC
Green status	Compliant with ROHS and REACH directive

ORDERING INFORMATION

Digital Patch Unit for NXAMP	NX.DPU (1 x DPU, 1 x Quick Start Guide)
Cable Kit for DPU, 100 ~120 Volts	NX.DPU.CK1 (2 x US lockable power cord, 1 x RS232 link, 2 x Speakon link 4x4 mm ²)
Cable Kit for DPU, 220 ~240 Volts	NX.DPU.CK2 (2 x EU lockable power cord, 1 x RS232 link, 2 x Speakon link 4x4 mm ²)

DMU

Digital Meter Unit



Key Features

- Intelligent input patch panel offering digital communication with NXAMPs.
- Provides input level meters on all analog and network inputs.
- Fully passive design on the audio and network paths.
- Powered through the host NXAMP, no need for mains supply.

Specifications

METER FEATURES

Integrated VU-meters	8 channels of 8 levels VU-meters, one per input (4 x Analog and 4 x Network).
Network activity	2 LEDs per network input.

FRONT PANEL FEATURES

Analog audio connectors	4 x Neutrik XLR-3 with parallel output link on XLR-3, named from A to D.
Network connectors	3 x Neutrik Ethercon connectors, named from 1 to 3.

BACK PANEL FEATURES

Analog audio connectors	4 x Neutrik XLR-3 passive connection to front panel XLR.
Network connectors	3 x RJ45 connectors, routed to front panel through matched impedance pairs.
GPIO connector	DB-25 for digital communication and power from host NXAMP.

DISPLAYED INFORMATION

When muted	Connected speaker name, speaker pin-out, connected NXAMP inputs names.
When unmuted	Connected speaker name, output meter.

GENERAL SPECIFICATIONS

Power supply	From GPIO port, 5 Volts DC, 1Watts.
Dimensions	1U 19" Rack - 50 mm (2") Depth.
Weight	1.2 Kg (2.6 lbs) net.
Electrical Safety Certification	cETLus, CB (CE)
EMC Certification	CE, FCC
Green status	Compliant with ROHS and REACH directive.

ORDERING INFORMATION

Digital Meter Unit for NXAMP	NX.DMU (1 x DMU, 1 x Quick Start Guide)
Cable Kit for DMU	NX.DMU.CK (4 x Neutrik XLR to XLR cords, 3 x RJ45 link (R,G,B), and 1 x DB-25 link)

NXES104

EtherSound™ Network Card



Key Features

- Extracts 4 audio streams (24 bits / 48 KHz) among the 2 x 64 channels of a ES100 Ethersound™ stream.
- IN and OUT port for simple daisy chain without any need for an external switch.
- 3rd Ethernet port for remote control of the whole network from any NXES104 card and ASIO streaming.

NXDT104

Dante™ Network Card



Key Features

- Receives 4 audio streams (24 bits / 48 KHz) in Dante™ format.
- Dual port for redundancy and 3rd port for additional remote control.
- Direct connection to PC using the ASIO format.

Specifications

	NXES104	NXDT104
--	---------	---------

NETWORK FORMAT		
Compatible networks	Ethersound networks	Dante networks
Network type	Ethernet 100 Mb	TCP/IP over Ethernet, 100 Mb or 1 Gb
Device addressing	Automatic, based on Mac address	Automatic, based on IP address with Zeroconf
AUDIO FORMAT		
Number of channels	4 channels from network to NXAMP	4 channels from network to NXAMP
Resolution / Sample Rate	24 bits / 48 KHz	24 bits / 48 KHz
Latency	0.10 ms	0.15 ms to 5.0 ms
FRONT PANEL FEATURES		
Network inputs	2 shielded Neutrik Ethercon	2 shielded Neutrik Ethercon
Additional port	RJ45 for additional remote control	RJ45 for additional remote control
LEDs on network ports	Tx and Rx on each port	Link/Act and Speed on each port
LEDs on additional port	Link and activity	Link and activity
GENERAL SPECIFICATIONS		
Power supply	+ 3.3 Volts, 5 W from NEXO slot	+ 3.3 Volts, 8 W from NEXO slot
Dimensions (W x D x H)	120 x 160 x 40 mm (NXAMP slot)	120 x 160 x 40 mm (NXAMP slot)
Weight	160 g 200 g	
EMC certification	CE, FCC, ICES	CE, FCC, ICES
Green Status	ROHS and REACH	ROHS and REACH
ORDERING INFORMATION		
Network card ordering	NX.ES104	NX.DT104

NeMo

Remote Monitoring App



Available free for iPad and iPhone, NEXO's NeMo Remote Monitoring app provides remote control over a NXAMP network from anywhere in the venue.

Key Features

- Visualise the NXAMP network on a 2D map
- Monitor and control the parameters of one or more devices, including:
 - input levels
 - output levels
 - patching between outputs and inputs
 - output parameters such as volume, gain, delay, array-EQ and headroom
 - device and channel mute and solo
 - setups
 - scenes



NEXO S. A.

Parc D'Activité
du Pré de la Dame Jeanne
B.P.5
60128 PLAILLY
France
Tel: +33 (0)3 44 99 00 70
Fax: +33 (0)3 44 99 00 30
E-mail: info@nexo.fr

NEXO LatAM

Tel: +1 305 677 9322
Fax: +1 360 234 7870
Email: info@nexo.fr

NEXO Asia

GPO Box 806
Hong Kong
SAR China
Tel: +852 9096 3472
Fax: +852 2104 3214
E-mail: info@nexo.fr